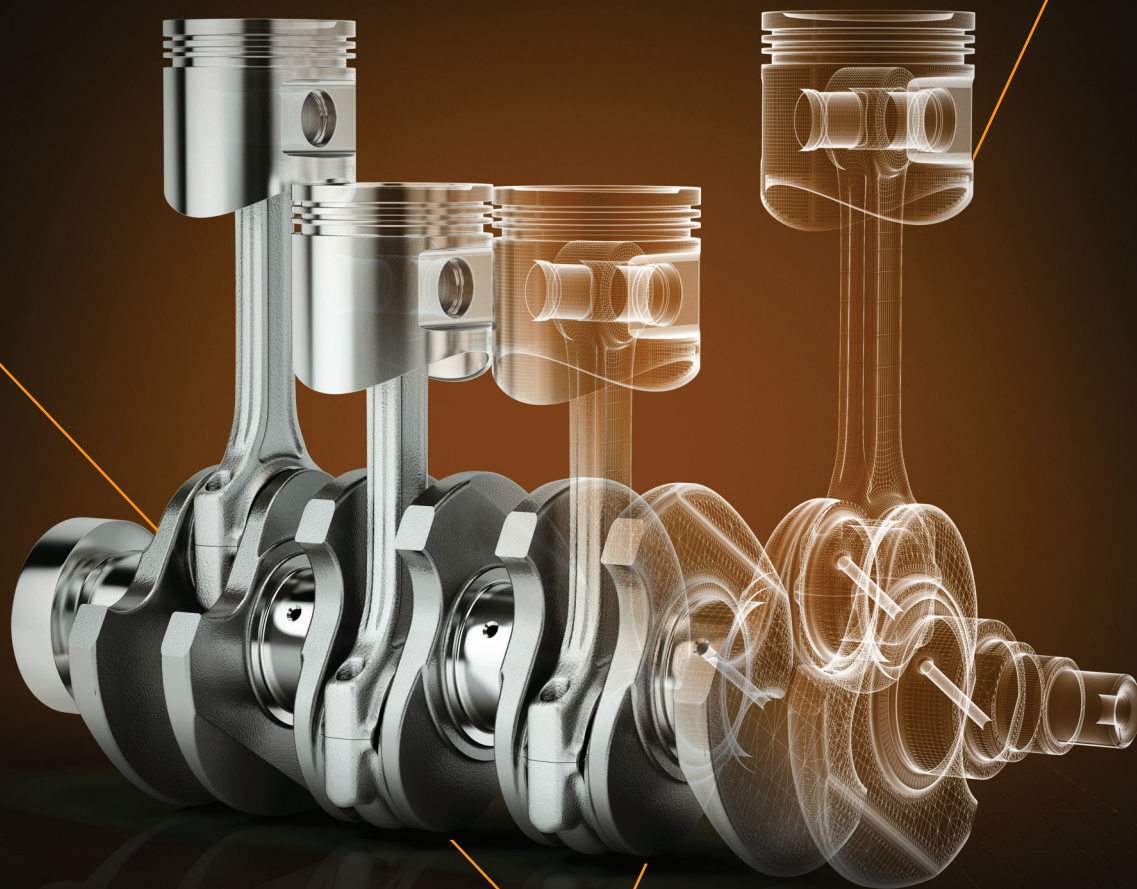
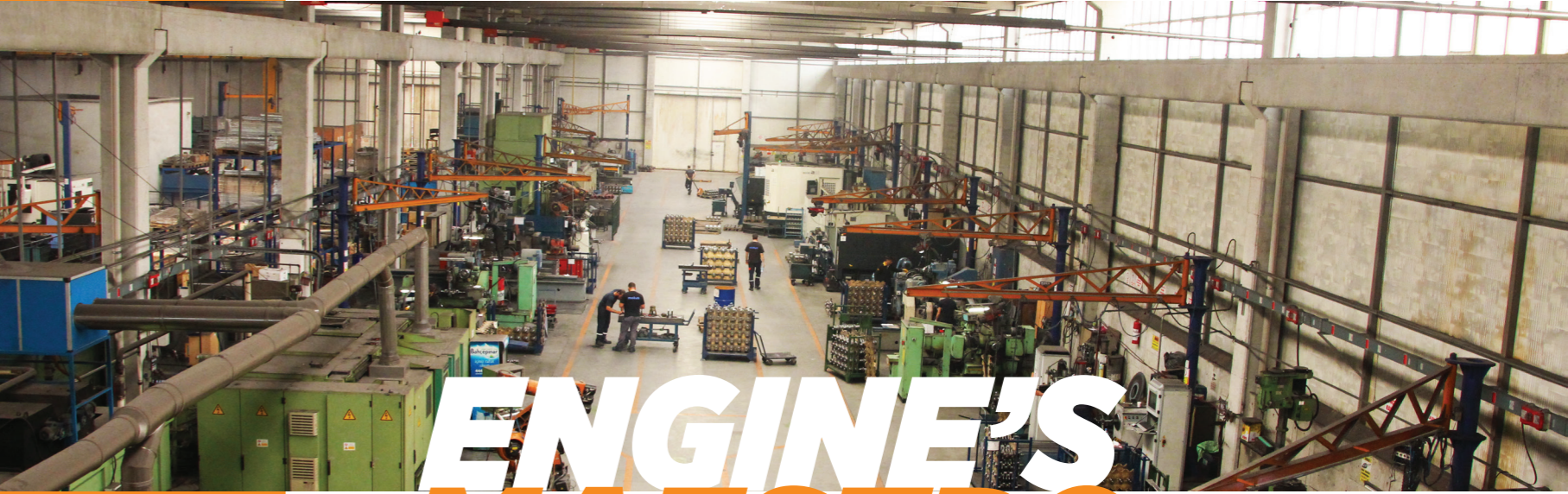




ENGINE'S
MAESTRO
PRODUCT CATALOGUE





ENGINE'S MAESTRO

ABOUT US

Under the motto of "High Performance Shared Power" MOTUS is a growing trademark on both domestic and international grounds with strong infrastructure, sophisticated machinery, broad product range, immense production capacity as well as qualified and experienced personnel. MOTUS aims at becoming a rule-setting company of its sector on a global level. Motus Crankshaft, which makes use of high quality spheroidal graphite cast iron in connection with the production process already succeeded in producing crankshafts within the regular measurement tolerances at global standards under supervision of its experienced metallurgical engineers. While exporting more than half of its productions to European Countries, Motus Crankshaft has proved its item's quality with analysis of customer satisfaction.

KURUMSAL

"Yüksek Performans Paylaşılan Güç" sloganıyla sektöründe faaliyet gösteren Motus Crankshaft; güçlü altyapısı, gelişmiş makine parkı, yüksek kapasiteli üretimi, geniş ürün gamı, yetkin ve tecrübeli personeli ile ulusal ve uluslararası zeminde büyüyen bir markadır. MOTUS, sektöründe "kural koyan" uluslararası bir marka olmayı hedef olarak benimsemiştir.

Ürünlerinde yüksek kaliteli küresel grafitli dökme demir kullanan MOTUS, uzman metalürji mühendislerinin çalışmaları sonucu, standart ölçü toleransları içinde dünya standartlarında kaliteli dökme demir krank mili üretmeyi başarmıştır. Üretimini yarısından çoğunu Avrupa ülkelerine ihraç eden Motus Crankshaft, kalitesini müşteri memnuniyeti analizleri ile ispat etmiştir.

OUR VISION

Being a "rule-setting" company in its sector on the global scale.

VİZYONUMUZ

Küresel ölçekte sektöründe "Kural Koyan" bir firma olmak.

OUR MISION

To offer the values produced in our "continuously learning" company to the service of the sector in the most economical way.

MİSYONUMUZ

Tüm paydaşların asgari müşterekte birleşerek maksimum pay alırken, «sürekli öğrenen» firmamızda «üretilen değerleri» en ekonomik şekilde sektörün hizmetine sunabilmektir.



17.000 m²
FACTORY AREA
17.000 m² ÜRETİM ALANI

MOTUS which is the close follower of innovations and sophisticated technologies, makes the productions with almost zero failure rate.

Yeniliklerin ve gelişmiş teknolojilerin yakın takipçisi MOTUS, sıfıra yakın hata oranıyla üretim yapıyor.



EXPORT TO
60 COUNTRIES
60 ÜLKEYE İHRACAT

WE ARE EXPORTING 55% OF OUR TOTAL PRODUCTION TO MORE THAN 60 COUNTRIES, 15 OF WHICH ARE EUROPEAN COUNTRIES.

ÜRETİMİNİN YAKLAŞIK %55'İNİ İHRAÇ EDEN MOTUS, 15'İ AVRUPA BİRLİĞİ ÜYESİ OLMAK ÜZERE, TOPLAM 60 ÜLKEYE İHRACAT YAPMAKTADIR.





**PASSENGER
CARS**
BİNEK ARAÇ



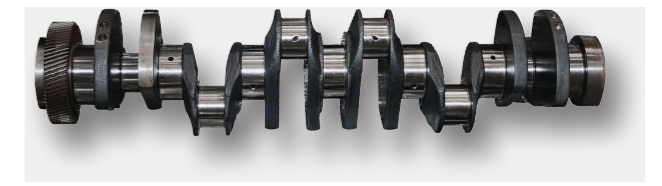
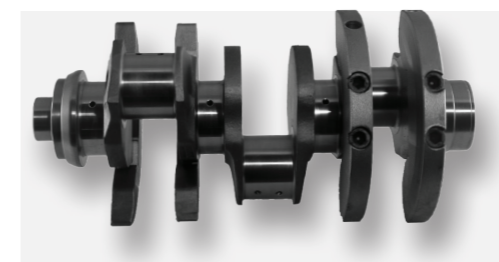
**COMMERCIAL
VEHICLES**
HAFİF TİCARİ
PANELVAN



**TRUCK / BUS
GROUP**
KAMYON OTOBÜS
GRUBU



**CONSTRUCTION
MACHINE
GROUP**
İŞ MAKİNESİ
GRUBU



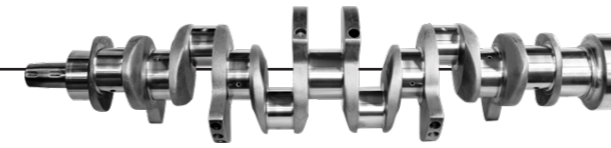
Crankshaft • Krank Mili • Vilebrequin

• Kurbelwelle • Cigüeñal • Коленчатый вал

PRODUCT LIST

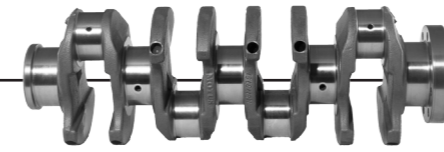
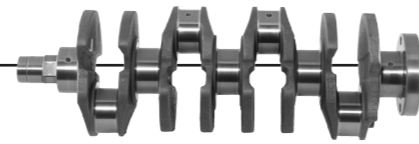
ÜRÜN LİSTESİ

INDEX İÇİNDEKİLER	PAGES SAYFALAR
LAND ROVER	10
BMV	10
VW	10
MERCEDES	10
SSANG YONG	11
RENAULT	11
TOFAŞ	11-12
OPEL	12
PEUGEOT - CITROEN	12
FORD	12
MAZDA	13
HYUNDAI	13
KIA	14
HONDA	14
ISUZU	14
TOYOTA	15
MITSUBISHI	15
NISSAN	15
TRACTOR GROUP / TRAKTÖR GRUBU	16-18
CONSTRUCTION MACHINE / İŞ MAKİNESİ	18
TRUCK & TRAILER & TANK / KAMYON & TIR & TANK	19-21



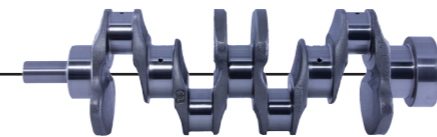
LAND ROVER				
MOTUS REF.	BRAND / MARKA	ORIGINAL PART NO ORJİNAL REFERANS NO	ENGINE TYPE / MOTOR TİPİ	CYLINDERS SİLİNDİR
MTS 1400	RANGE ROVER	LR010297 - LEF000001	RANGE ROVER SPORT DISCOVERY 3 KRANK 2.7 TDV6 DİZEL / DIESEL	V6 CYL
BMV				
MOTUS REF.	BRAND / MARKA	ORIGINAL PART NO ORJİNAL REFERANS NO	ENGINE TYPE / MOTOR TİPİ	CYLINDERS SİLİNDİR
MTS 1300	BMW	11218515071 - 11217803479	N47 MOTOR DİZEL MOTOR (977) - 2.0 DİZEL / DIESEL 3.20 - 4.20 - 5.20 - X1 - X3 - X4 - X5 DİZEL / DIESEL GÜÇLENDİRİLMİŞ / REINFORCED	4 CYL
MTS 1301	BMW	11217799970	N57 DİZEL MOTOR (971) F01 KASA 7.30D - 7.35D - 7.40D F10 KASA 5.30D - 5.35D - 5.40D F30 KASA 3.30D - 3.35D X6 SERİSİ 3.00 CC - 3.50 CC - 4.50 CC MOTORLAR GÜÇLENDİRİLMİŞ / MOTORS REINFORCED	6 CYL
VW				
MOTUS REF.	BRAND / MARKA	ORIGINAL PART NO ORJİNAL REFERANS NO	ENGINE TYPE / MOTOR TİPİ	CYLINDERS SİLİNDİR
MTS 0220	VOLKSWAGEN	74105119	VOLKSWAGEN 2.5 TDI 10V ANJ (LT 35 - VOLT) ANG-AVR-BBE-BEF - GÜÇLENDİRİLMİŞ / REINFORCED	5 CYL
MTS 0221	VOLKSWAGEN	76105101	VOLKSWAGEN 2.5 TDI 10V AXD CRAFTER - GÜÇLENDİRİLMİŞ / REINFORCED	5 CYL
MTS 0222	VOLKSWAGEN	038105021E/038105021Q	VOLKSWAGEN 1.9 TDI 8V BXE (POLO/CADDY) BJB-BES-BS - GÜÇLENDİRİLMİŞ / REINFORCED	4 CYL
MTS 0223	VOLKSWAGEN	03G105021L	VOLKSWAGEN 1.9 TDI - GÜÇLENDİRİLMİŞ / REINFORCED	4 CYL
MTS 0224	VOLKSWAGEN	03L105021C	VOLKSWAGEN 2.0 TDI - GÜÇLENDİRİLMİŞ / REINFORCED	4 CYL
MTS 0225	VOLKSWAGEN	03L105021A	VOLKSWAGEN 1.6 TDI CAY - GÜÇLENDİRİLMİŞ / REINFORCED	4 CYL
MERCEDES				
MOTUS REF.	BRAND / MARKA	ORIGINAL PART NO ORJİNAL REFERANS NO	ENGINE TYPE / MOTOR TİPİ	CYLINDERS SİLİNDİR
MTS 1200	MERCEDES	646 031 0401 - 611 031 0201 - 611 031 0001	MERCEDES BENZ OM 611 DE22 4 CYL SPRINTER 646 - GÜÇLENDİRİLMİŞ / REINFORCED	4 CYL
MTS 1202	MERCEDES	612 030 0203 - 647 030 0103	OM 612-OM 647 2,7 CDI 20 VALVE - GÜÇLENDİRİLMİŞ / REINFORCED	5 CYL
MTS 1204	MERCEDES	651 030 2501	OM 651 SPRINTER - VITO EURO5 - GÜÇLENDİRİLMİŞ / REINFORCED	4 CYL
MTS 1205	MERCEDES	642 030 1601 - 642 030 0901	OM 642 S320 CDI - GÜÇLENDİRİLMİŞ / REINFORCED	V6 CYL
MTS 0864	MERCEDES		MERCEDES X CLASS / X 220D - X250 D / 2.3 DİZEL - GÜÇLENDİRİLMİŞ / DIESEL - REINFORCED	4 CYL

SSANG YONG				
MOTUS REF.	BRAND / MARKA	ORIGINAL PART NO ORJİNAL REFERANS NO	ENGINE TYPE / MOTOR TİPİ	CYLINDERS SİLİNDİR
MTS 0790	SSANGYONG	6640310101	SSANGYONG KRANK MİLİ ACTYON / ACTYON SPORTS / KYRON / REXTON 2.0 dizel - D20T / diesel	4 CYL
RENAULT				
MOTUS REF.	BRAND / MARKA	ORIGINAL PART NO ORJİNAL REFERANS NO	ENGINE TYPE / MOTOR TİPİ	CYLINDERS SİLİNDİR
MTS 0850	RENAULT	7700564485	RENAULT BROADWAY - TOROS 1400 CC R12 R9	4 CYL
MTS 0851	RENAULT	7700273951	RENAULT EXPRES-KANGOO-CLIO- ENERGY DACIA LOGAN E7J MOTOR 1400 CC	4 CYL
MTS 0852	RENAULT	8200590576	RENAULT MASTER - ESPACE G9T MOTOR 2,2 DCI (DİŞLİ ÜZERİNE TAKILI) / (WITH GEAR / CON EN- GRANAJE) - GÜÇLENDİRİLMİŞ / Reinforced	4 CYL
MTS 0853	RENAULT	8200382457	RENAULT FLUENCE-CLIO-KANGOO-MEGANE K9K MOTOR 1.5 DCI 12 METRİK - GÜÇLENDİRİLMİŞ / Reinforced	4 CYL
MTS 0854	RENAULT	8200382457	RENAULT FLUENCE-CLIO-KANGOO-MEGANE K9K MOTOR 1.5 DCI 14 METRİK - GÜÇLENDİRİLMİŞ / Reinforced	4 CYL
MTS 0856	RENAULT	8200037836	RENAULT MEGANE-LAGUNA-TRAFIC F9Q MOTOR 1.9 DCI - GÜÇLENDİRİLMİŞ / Reinforced	4 CYL
MTS 0857	RENAULT	8200314795	RENAULT MASTER 2,5 DCI G9U MOTOR - GÜÇLENDİRİLMİŞ / Reinforced	4 CYL
MTS 0858	RENAULT	7700111883	RENAULT KANGOO - MEGANE F8Q MOTOR 1.9 DCI - GÜÇLENDİRİLMİŞ / Reinforced	4 CYL
MTS 0860	RENAULT	7700704658	RENAULT F2N 11 FLASH 1700 cc DIESEL	4 CYL
MTS 0861	RENAULT	7702252575	RENAULT C2L 9 FAIRWAY 1600 cc OIL	4 CYL
MTS 0863	RENAULT	8200385222	RENAULT M9R MOTOR 2.0 DCI (MEGANE - KOLEOS - LATITUDE - TRAFFIC - LAGUNA)	4 CYL
MTS 0864	RENAULT	8200805743 122010072R	RENAULT MASTER 3 - M9T MOTOR - 2.3 DCI RENAULT TRAFFIC 3 - 2.0 DCI	4 CYL
TOFAŞ				
MOTUS REF.	BRAND / MARKA	ORIGINAL PART NO ORJİNAL REFERANS NO	ENGINE TYPE / MOTOR TİPİ	CYLINDERS SİLİNDİR
MTS 0250	FIAT / TOFAŞ	7670815	FIAT TOFAŞ 131 1600 cc (Volant :74 mm - Hosing Dia :32 mm)	4 CYL
MTS 0251	FIAT / TOFAŞ	5888226	FIAT TEMPRA SLX 1.6 / UNO 70	4 CYL
MTS 0252	FIAT / TOFAŞ	55200307	FIAT ALBEA-DOBLO-FIORINO-IDEA-LINEA-PALIO- PUNTO-500L-EGEA 1.3 MULTIJET ENGINES DIESEL - GÜÇLENDİRİLMİŞ / Reinforced	4 CYL
MTS 0253	FIAT / TOFAŞ		FIAT DOBLO - SCUDO 1.9 DIESEL	4 CYL
MTS 0254	FIAT / TOFAŞ	71736266	FIAT DOBLO - SCUDO 1.9 JTD DIESEL	4 CYL
MTS 0255	FIAT / TOFAŞ	5893589	FIAT PALIO-DOBLO-ALBEA 1.2 MOTOR 8 VALVE- GÜÇLENDİRİLMİŞ / Reinforced	4 CYL



TOFAŞ				
MOTUS REF.	BRAND / MARKA	ORIGINAL PART NO ORJİNAL REFERANS NO	ENGINE TYPE / MOTOR TİPİ	CYLINDERS SİLİNDİR
MTS 0256	FIAT / TOFAŞ	71718466	FIAT PALIO-DOBLO-ALBEA 1.2 MOTOR 16 VALVE- GÜÇLENDİRİLMİŞ / Reinforced	4 CYL
MTS 0260	FIAT/ TOFAŞ		MAREA - SLX 1.6 / PERFORMANS ARAÇLARI / PERFORMANCE Reinforced	4 CYL
MTS 0261	FIAT / TOFAŞ	71753030	FIAT EGEA - LINEA - DOBLO - PUNTO - FIAT 500 1.6 MULTIJET - GÜÇLENDİRİLMİŞ / Reinforced	4 CYL
MTS 0262	FIAT / TOFAŞ	504049281	FIAT DUCATO 2.3 MULTIJET F1AE / IVECO DAILY / KARSAN JEST MİNİBÜS / KARSAN J10 MİNİBÜS EURO 4- 5	4 CYL
OPEL				
MOTUS REF.	BRAND / MARKA	ORIGINAL PART NO ORJİNAL REFERANS NO	ENGINE TYPE / MOTOR TİPİ	CYLINDERS SİLİNDİR
MTS 0252	OPEL	55200307	OPEL CORSA-ASTRA-COMBO 1.3 CDTI GÜÇLENDİRİLMİŞ / Reinforced	4 CYL
MTS 0261	OPEL	71753030	OPEL CORSA-ASTRA-COMBO 1.6 CDTI GÜÇLENDİRİLMİŞ / Reinforced	4 CYL
MTS 0856	OPEL	8200037836	OPEL VİVARO F9Q MOTOR 1.9 CDI GÜÇLENDİRİLMİŞ / Reinforced	4 CYL
MTS 0857	OPEL	8200314795	OPEL MOVANO G9U MOTOR D.5 DCI GÜÇLENDİRİLMİŞ / Reinforced	4 CYL
MTS 0960	OPEL	96440169	OPEL ANTARA 2.0 DİZEL / CHEVROLET CAPTIVA GÜÇLENDİRİLMİŞ / Reinforced	4 CYL
PEUGEOT CITROEN				
MOTUS REF.	BRAND / MARKA	ORIGINAL PART NO ORJİNAL REFERANS NO	ENGINE TYPE / MOTOR TİPİ	CYLINDERS SİLİNDİR
MTS 0750	PEUGEOT	050188.04	PEUGEOT XD3 J9	4 CYL
MTS 0751	PEUGEOT	0501.H6	PEUGEOT BOXER 2,8 D	4 CYL
MTS 0753	PEUGEOT	5010101	PEUGEOT J9- J10 PREMIER 2.8 DI	4 CYL
MTS 0754	CITROEN	0501.J9	CITROEN 1.4 HDI (DV4) C2 / C3 1.4 TD GÜÇLENDİRİLMİŞ / Reinforced	4 CYL
MTS 0755	CITROEN	0501.K6	CITROEN 1.6 HDI (DV6 - 9HX) C3 / C4 / C5 / PICASSO / BERLINGO 1.6 HDI - GÜÇLENDİRİLMİŞ / Reinforced	4 CYL
FORD				
MOTUS REF.	BRAND / MARKA	ORIGINAL PART NO ORJİNAL REFERANS NO	ENGINE TYPE / MOTOR TİPİ	CYLINDERS SİLİNDİR
MTS 0300	FORD	VC1Q 6303CB	FORD TRANSIT 2.4 TDCI (V.184 - D2FA) - GÜÇLENDİRİLMİŞ / Reinforced	4 CYL
MTS 0301	FORD	XM34 6300BB	FORD RANGER 2.5	4 CYL
MTS 0302	FORD	894F-6303AA	FORD TRANSIT T12 / T15	4 CYL
MTS 0303	FORD	7M5Q 6303AB	FORD 1.6 HDI (DV6 - 9HX) FOCUS / C-MAX / FUSION - GÜÇLENDİRİLMİŞ / Reinforced	4 CYL
MTS 0754	FORD	2S6Q 6303AA	FORD 1.4 HDI (DV4) FIESTA 1.4 GÜÇLENDİRİLMİŞ / Reinforced	4 CYL

MAZDA				
MOTUS REF.	BRAND / MARKA	ORIGINAL PART NO ORJİNAL REFERANS NO	ENGINE TYPE / MOTOR TİPİ	CYLINDERS SİLİNDİR
MTS 0550	MAZDA	R2Y111300A	MAZDA E 2200 PICK UP R 2, E 2200 PICK UP	4 CYL
MTS 0553	MAZDA	OK41011301A / SL511301-A/B	MAZDA 3500 CC SL	4 CYL
MTS 0554	MAZDA	SH511301- A/B	MAZDA 3600 CC SH	4 CYL
MTS 0555	MAZDA		MAZDA 4000 CC	4 CYL
MTS 0556	MAZDA	L59111300	MAZDA 6 2.0 TD - GÜÇLENDİRİLMİŞ / Reinforced	4 CYL
MTS 0558	MAZDA	WL0111300	MAZDA 2500 TD 12 VALF WL	4 CYL
MTS 0559	MAZDA		MAZDA 4100 CC	4 CYL
HYUNDAI				
MOTUS REF.	BRAND / MARKA	ORIGINAL PART NO ORJİNAL REFERANS NO	ENGINE TYPE / MOTOR TİPİ	CYLINDERS SİLİNDİR
MTS 0900	HYUNDAI	23111-42002 / 23111-42901	HYUNDAI D4BB H-100 MINIBUS /PICKUP	4 CYL
MTS 0908	HYUNDAI	23111-42002 / 23111-42901	HYUNDAI D4BB H-100 MINIBUS / PICKUP - GÜÇLENDİRİLMİŞ / Reinforced (Nitration heat treatment)	4 CYL
MTS 0913	HYUNDAI	23111-42902	HYUNDAI 2600 PICKUP , T2	4 CYL
MTS 0915	HYUNDAI	23110-27500	HYUNDAI ACCENT 1,3 - 1,5 - GÜÇLENDİRİLMİŞ REINFORCED	3 CYL
MTS 0916	HYUNDAI	23111-12011 / 23111-42012	HYUNDAI STAREX H-2500 TURBO GÜÇLENDİRİLMİŞ / REINFORCED	4 CYL
MTS 0916 F	HYUNDAI	23111-12011 / 23111-42012	HYUNDAI STAREX H-2500 TURBO DÖVME ÇELİK / FORGING	4 CYL
MTS 0917	HYUNDAI	23110-4A00 / 4A010	HYUNDAI D4CB 2.5 CRDI 140 HP STAREX H1 - GÜÇLENDİRİLMİŞ / REINFORCED	4 CYL
MTS 0919	HYUNDAI	23111-26400	HYUNDAI ERA 1,5 CRDI 8 BALTA - GÜÇLENDİRİLMİŞ / REINFORCED	4 CYL
MTS 0920	HYUNDAI	23110- 2A701A	HYUNDAI 1.5 - 1.6 CRDI ERA / ELENTRA / ACCENT BLUE 4 BALTA / COUNTERWEIGHTS - U16 MOTOR STROK: 42,25 - GÜÇLENDİRİLMİŞ / REINFORCED	4 CYL
MTS 0921	HYUNDAI	23110-2A502	HYUNDAI 1,4 CRDI İ 20 / TROY / İX20 / PRİME 4 BALTA / COUNTERWEIGHTS - U14 MOTOR STROK: 39,50 GÜÇLENDİRİLMİŞ / REINFORCED	4 CYL
MTS 0922	HYUNDAI	23111-26400 23110-26400	HYUNDAI ACCENT ERA & GETZ 1.4 CC (2006 - 2011) - G4EE	4 CYL
MTS 0923	HYUNDAI	23111-261001 23111-26101 23110-26101	HYUNDAI ACCENT 2003 - 2005 1.6 CC BENZİN OİL - G4ED HYUNDAI ACCENT ERA 2006 - 2011 1.6 CC BENZİN OİL- G4ED	4 CYL



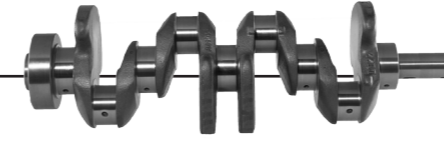
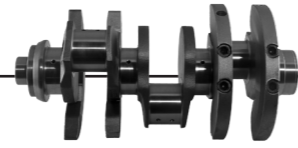
KIA				
MOTUS REF.	BRAND / MARKA	ORIGINAL PART NO ORJINAL REFERANS NO	ENGINE TYPE / MOTOR TİPİ	CYLINDERS SİLİNDİR
MTS 0552	KIA	OK65A11301	KIA BONGO K2700, PREGIO	4 CYL
MTS 0553	KIA	OK41011301A / SL511301-A/B	KIA COBRA 3500, K3500, MAZDA 3500 CC SL	4 CYL
MTS 0916	KIA	23111-12011 / 23111-42012	BONGO TCI 2500 TURBO - GÜÇLENDİRİLMİŞ / REINFORCED	4 CYL
MTS 0917	KIA	23110-4A00 / 4A010	SORENTO 140-170 HP 2.5 CRDI 140 HP GÜÇLENDİRİLMİŞ / REINFORCED	4 CYL
MTS 0919	KIA	23111-26400	CERATO / RIO 1,5 CRDI 8 BALTA COUNTERWEIGHTS-GÜÇLENDİRİLMİŞ/REINFORCED	4 CYL
MTS 0920	KIA	23110- 2A701A	CERATO / RIO 1.5 - 1.6 CRDI 4 BALTA COUNTERWEIGHTS - U16 MOTOR STROK: 42.25 - GÜÇLENDİRİLMİŞ / REINFORCED	4 CYL
MTS 0921	KIA	23110-2A502	CERATO / RIO 1.4 CRDI 4 BALTA 4 BALTA COUNTERWEIGHTS- U14 MOTOR STROK: 39,50 - GÜÇLENDİRİLMİŞ / REINFORCED	4 CYL
MTS 0922	KIA	23111-26400 23110-26400	KIA RIO - CERATO 1.4 CC (2006 - 2011) - G4EE	4 CYL
MTS 0923	KIA	23111-261001 23111-26101 23110-26101	KIA RIO - CERATO 2003 - 2011 1.6 CC BENZİN / OİL - G4ED	4 CYL
HONDA				
MOTUS REF.	BRAND / MARKA	ORIGINAL PART NO ORJINAL REFERANS NO	ENGINE TYPE / MOTOR TİPİ	CYLINDERS SİLİNDİR
MTS 0740	HONDA	13310PM6G01	HONDA CIVIC 1.6 MOTOR / ENGINE D16 - D16Y (1996 - 2001) 8 BALTALI KASNAK ÇAPI 28 MM / COUNTERWEIGHTS PULLEY DIAMETER 28 MM	4 CYL
MTS 0741	HONDA	13310PLHG00	HONDA CIVIC 1.6 MOTOR D16 (1990 - 96) 8 BALTALI KASNAK ÇAPI 24 MM / COUNTERWEIGHTS PULLEY DIAMETER 24 MM	4 CYL
MTS 0742	HONDA	13310RNFE00	HONDA CIVIC 1.6 MOTOR R16 - R18 (2007 - 2013) 4 BALTA / COUNTERWEIGHTS	4 CYL
ISUZU				
MOTUS REF.	BRAND / MARKA	ORIGINAL PART NO ORJINAL REFERANS NO	ENGINE TYPE / MOTOR TİPİ	CYLINDERS SİLİNDİR
MTS 0700	ISUZU	8971129812 / 8971465202	ISUZU CHAMPION TRUCK 4HF1 (NPR 66 CHAMPION) 4HG1 (URBAN - RAYBUS)	4 CYL
MTS 0701	ISUZU	5123101631	ISUZU NPR 59 4BD1 4BB1	4 CYL
MTS 0702	ISUZU	1123104071/1123104370	ISUZU 6BD1T 6BB1	6 CYL
MTS 0703	ISUZU	8944436620 / 8944552401	ISUZU NKR 4JB1	4 CYL
MTS 0704	ISUZU	8944163732	ISUZU NPR 4BE1	4 CYL
MTS 0705	ISUZU	8973525342	ISUZU NQR 4HE1	4 CYL

ISUZU				
MOTUS REF.	BRAND / MARKA	ORIGINAL PART NO ORJINAL REFERANS NO	ENGINE TYPE / MOTOR TİPİ	CYLINDERS SİLİNDİR
MTS 0706 F	ISUZU	8980292700	4HK1 ISUZU (NOVO - TURKUAZ - CITIMARK - CITIBUS) (DÖVME ÇELİK) / (FORGING)	4 CYL
MTS 0706	ISUZU	8980292700	ISUZU 4HK1 (NOVO - TURKUAZ - CITIMARK - CITIBUS)	4 CYL
TOYOTA				
MOTUS REF.	BRAND / MARKA	ORIGINAL PART NO ORJINAL REFERANS NO	ENGINE TYPE / MOTOR TİPİ	CYLINDERS SİLİNDİR
MTS 0720	TOYOTA	13401-11050	TOYOTA COROLLA 1.3 BENZİN MOTOR 4E 1300cc	4 CYL
MTS 0721	TOYOTA	13411-02901	TOYOTA COROLLA 1.6 BENZİN MOTOR 5A 1600cc / 6 Holes	4 CYL
MTS 0723	TOYOTA	13401 - 22030	TOYOTA COROLLA VVTI 1.6 BENZİN MOTOR / OİL	4 CYL
MTS 0724	TOYOTA	13401-33011	TOYOTA D4D ÇİFT KAMALI -1ND MOTOR 6 İLERİ VİTES - GÜÇLENDİRİLMİŞ / Keyway-REINFORCED	4 CYL
MTS 0725	TOYOTA	13401-33011	TOYOTA D4D TEK KAMALI -1ND MOTOR 5 İLERİ VİTES - GÜÇLENDİRİLMİŞ / Keyway-REINFORCED	4 CYL
MTS 0726	TOYOTA	13401 - 30030 / 13401 - 30060 13401 - 0L030 / 13401 - 0L100	TOYOTA HILUX - VIGO 2KDFTV 2.5 MOTOR - EURO4	4 CYL
MTS 0727	TOYOTA	13401 - 47011	TOYOTA - COROLLA - AURIS - YARIS - 1.33 BENZİN MOTOR / OİL- 1NRFE	4 CYL
MITSUBISHI				
MOTUS REF.	BRAND / MARKA	ORIGINAL PART NO ORJINAL REFERANS NO	ENGINE TYPE / MOTOR TİPİ	CYLINDERS SİLİNDİR
MTS 0901	MITSUBISHI	ME 013668	MITSUBISHI 4D34 CANTER HD FE 449, FE 635, FE 639	4 CYL
MTS 0902	MITSUBISHI	ME 013667	MITSUBISHI 4D31 CANTER FE 444, FE 304, FB 211	4 CYL
MTS 0903	MITSUBISHI	ME 01734	MITSUBISHI 4D34 -4D35 T CANTER TURBO FE 659 T	4 CYL
MTS 0904	MITSUBISHI	ME 018297	MITSUBISHI 4D34 CANTER FE 659	4 CYL
MTS 0906	MITSUBISHI	ME 193484	MITSUBISHI M42T 859 EURO 4 - GÜÇLENDİRİLMİŞ / REINFORCED	4 CYL
MTS 0907	MITSUBISHI	1100A028-1100A135	MITSUBISHI L 200 CR 4D56U 2500 MOTOR - GÜÇLENDİRİLMİŞ / REINFORCED	4 CYL
MTS 0918	MITSUBISHI	MD 017152	MITSUBISHI 4D32 CANTER FE 515	4 CYL



NISSAN				
MOTUS REF.	BRAND / MARKA	ORIGINAL PART NO ORJİNAL REFERANS NO	ENGINE TYPE / MOTOR TİPİ	CYLINDERS SİLİNDİR
MTS 0880	NISSAN	12200-AD210	NISSAN YD25DDTI NISSAN NAVARA 2,5 NISSAN PATHFINDER 2,5 DDTI NISSAN FRONTIER - GÜÇLENDİRİLMİŞ / REINFORCED	4 CYL
MTS 0881	NISSAN	12200-5X00A / 12200-KH40A	NISSAN NAVARA YD25DDTI D40 EURO5 - 160 - 190 HP - GÜÇLENDİRİLMİŞ / REINFORCED	4 CYL
MTS 0864	NISSAN	8200805743 122010072R	NISSAN NAVARA EURO 6 MOTOR - 2.3 DİZEL GÜÇLENDİRİLMİŞ / DIESEL REINFORCED	4 CYL
TRAKTÖR GRUBU				
MOTUS REF.	BRAND / MARKA	ORIGINAL PART NO ORJİNAL REFERANS NO	ENGINE TYPE / MOTOR TİPİ	CYLINDERS SİLİNDİR
MTS 0001	MF (PERKINS)	ZZ90084/31312419/31312436/31312401	3.152 135 PERKINS (3.152) / MF (ROPE SEAL)	3 CYL
MTS 0002	MF (PERKINS)	ZZ90078/31312707/31312701/94458	3.152 135 PERKINS (3.152) / MF (LIP SEAL)	3 CYL
MTS 0003	MF (PERKINS)	ZZ90121/31315148/85811/92458	4.203 PERKINS / MF (ROPE SEAL) 65,165,158,650,765	4 CYL
MTS 0004	MF (PERKINS)	ZZ90111/94441/94454-55/31315182	4.203 PERKINS / MF (LIP SEAL)	4 CYL
MTS 0007	MF (PERKINS)	ZZ90108/3135884/31315601/31315851	4.236 PERKINS / MF (ROPE SEAL) NOSE 1 HOLE	4 CYL
MTS 0008	MF (PERKINS)	ZZ90082/31315631/94433/31315664	4.236 PERKINS / MF (LIP SEAL) NOSE 1 HOLE	4 CYL
MTS 0009	MF (PERKINS)	ZZ90093/84442/85721	4.248 PERKINS / MF (ROPE SEAL) NOSE 3 HOLE	4 CYL
MTS 0010	MF (PERKINS)	ZZ90081/94435/94436	4.248 PERKINS / MF (LIP SEAL) NOSE 3 HOLE	4 CYL
MTS 0010/N	MF (PERKINS)		4.248 PERKINS / MF (LIP SEAL) NOSE 3 HOLE FLANGE 12 BOLT HOLES JENARATOR	4 CYL
MTS 0011	MF (PERKINS)	ZZ90093/84421/94434/7340893M1	4.248 PERKINS / MF (ROPE SEAL) HEAVY WEIGHT NOSE 1 HOLE	4 CYL
MTS 0012	MF (PERKINS)	U5BG0024/31315981/31315982/31315991	4.248 PERKINS / MF (LIP SEAL) (HEAVY WEIGHT) NOSE 1 HOLE	4 CYL
MTS 0014	MF (PERKINS)	ZZ90117/31312702/68044/94463	135 PERKINS (3.152) / MF (LIP SEAL) SPLINED NOSE	3 CYL
MTS 0015	MF (PERKINS)	ZZ90089 - 31322361	6.354-2 PERKINS (HEAVY WEIGHT) (ROPE SEAL) NOSE 3 HOLE	6 CYL
MTS 0016	MF (PERKINS)	ZZ90090 - 31323261 - 94468	6.354-2 PERKINS (HEAVY WEIGHT) (LIP SEAL) NOSE 3 HOLE	6 CYL
MTS 0017	MF (PERKINS)	ZZ90105-ZZ90086-4224054M91	6.354-4 PERKINS (LIP SEAL TYPE) (AS 950) 3 Holes Flange:12 Bolt Holes,1 Dowel	6 CYL
MTS 0021	MF (PERKINS)		PERKINS (HEAVY WEIGHT) NOSE 3 HOLE	3 CYL
MTS 0101	FIAT - IVECO	1930130 / 4653850	FIAT 450 6 HOLE 95mm FLANGE (With Gear)	3 CYL
MTS 0105	FIAT - IVECO	4682232	FIAT 640 / FIAT 50 NC / 780 7 HOLE110 mm FLANGE (With Gear)	4 CYL
MTS 0107	FIAT - IVECO	4653287	FIAT 640 TRACTOR 6 HOLE 95mm FLANGE (With Gear)	4 CYL

TRAKTÖR GRUBU				
MOTUS REF.	BRAND / MARKA	ORIGINAL PART NO ORJİNAL REFERANS NO	ENGINE TYPE / MOTOR TİPİ	CYLINDERS SİLİNDİR
MTS 0108	FIAT - IVECO	4785104	FIAT 50 NC / 640 7 HOLE 114 mm FLANGE (With Gear)	4 CYL
MTS 0111	FIAT - IVECO	98451527 / 50407531	IVECO 65,9 / 120,14 7 HOLE 114 FLANGE (With Gear)	4 CYL
MTS 0113	FIAT - IVECO		FIAT ALIS FR 15	6 CYL
MTS 0115	FIAT - IVECO	4707125	FIAT 750 TRACTOR C03C120, OM 55 CO3 6 hole 155 flange (With Gear)	4 CYL
MTS 0116	FIAT - IVECO	500314784 / 500344443	IVECO DAILY 2,8 L 100 mm - 114 mm (With Gear)	4 CYL
MTS 0117	FIAT - IVECO	4832171	IVECO 8360 160-90 7 HOLE 125mm FLANGE (With Gear)	6 CYL
MTS 0118	FIAT - IVECO	504033129	DUCATO, SOFIM 2.8 DAILY 8140.23 STROKE: 100 FLANGE: 114 HOSING DIA: 35 MM	4 CYL
MTS 0120	FIAT - IVECO	99473897	DUCATO, SOFIM 2.5 DAILY 8140.27 STROKE: 92 FLANGE: 114 HOSING DIA: 32 MM	4 CYL
MTS 0121	FIAT - IVECO	500347272	DUCATO, SOFIM 2.5 DAILY 8140.27 STROKE: 92 FLANGE: 114 HOSING DIA: 35 MM	4 CYL
MTS 0150	UNIVERSAL - UTB	115 03 020	UNIVERSAL D 115 TRACTOR 350, 360, 445, 455	3 CYL
MTS 0151	UNIVERSAL - UTB	121 03 021	UNIVERSAL D 121 TRACTOR 460, 550	4 CYL
MTS 0152	UNIVERSAL - UTB	103 03 010	UNIVERSAL 650	4 CYL
MTS 0200	IHC CASE	3110995 R 91 / 05700AB	INTERNATIONAL 444 / CASE - IHC BD154 TRACTOR: 444, 384, BD144, B275, B276,B354, A414, B414, 434	4 CYL
MTS 0201	IHC CASE	3132968 R 91/ 1329196C1	INTERNATIONAL D206 TRACTOR: 684,624, 654, 554, 474, 584, 585, 595, 733,740, 3230	4 CYL
MTS 0203	IHC CASE	3144626 R 92 / 3132752R3/ 015C1	INTERNATIONAL D239 TRACTOR: 684, 724, 744, 824, 544, 574, 674, 685, 695, 745, 784, 833, H84 Diesel Tractor, 1230	4 CYL
MTS 0350	JOHN DEERE	AT18031,T2251 T23517	JOHN DEERE 3-152/3-164/3-179/ ENGINE	3 CYL
MTS 0351	JOHN DEERE	AT18030-RE33197	JOHN DEERE 3-152/3-164/3-179/ ENGINE	4 CYL
MTS 0352	JOHN DEERE	RE20585 - RE36605	JOHN DEERE 4-239/4039 (2450/2650/2850)	4 CYL
MTS 0353	JOHN DEERE	RE56792	JOHN DEERE 4-276D/4-276T	4 CYL
MTS 0354	JOHN DEERE	AT22562 -T23266	JOHN DEERE 6-303/6-329/6-359/6059	6 CYL
MTS 0355	JOHN DEERE	RE53422	JOHN DEERE 6466T/6404 (4250)	6 CYL
MTS 0401	DEUTZ	0415 2591-0223 2854 - 0292 9337	DEUTZ F 2 L 912	2 CYL
MTS 0402	DEUTZ	0415 2646 - 0292 9338	DEUTZ F 3 L 912 TRACTOR (With Gear)	3 CYL
MTS 0403	DEUTZ	0213 8819 -0415 2903-0292 9340	DEUTZ F 4 L 912 MINIBUS (With Gear)	4 CYL
MTS 0405	DEUTZ	0415 1011 - 0292 9342	DEUTZ F 6 L 912 (With Gear)	6 CYL
MTS 0407	DEUTZ	0415 2745	DEUTZ F 2 L 511D	2 CYL


TRAKTÖR GRUBU

MOTUS REF.	BRAND / MARKA	ORIGINAL PART NO ORJİNAL REFERANS NO	ENGINE TYPE / MOTOR TİPİ	CYLINDERS SİLİNDİR
MTS 0408	DEUTZ	02929345- 0292890	DEUTZ F 6 L 913 C-T (With Gear)	6 CYL
MTS 0409	DEUTZ	2928288	DEUTZ F2L 1011	2 CYL
MTS 0410	DEUTZ	2928289 - 4270229	DEUTZ F3L 1011	3 CYL
MTS 0411	DEUTZ	04270233 - 02928290	DEUTZ F4L 1011	4 CYL
MTS 0412	DEUTZ	4271639	DEUTZ F3L 2011	3 CYL
MTS 0413	DEUTZ	4270236	DEUTZ F4L 2011	4 CYL
MTS 0414	DEUTZ	4204212	DEUTZ F4M 1012 (With Gear)	4 CYL
MTS 0415	DEUTZ	4209126	DEUTZ F4M 1013 (With Gear)	4 CYL

CONSTRUCTION MACHINE / İŞ MAKİNESİ

MOTUS REF.	BRAND / MARKA	ORIGINAL PART NO ORJİNAL REFERANS NO	ENGINE TYPE / MOTOR TİPİ	CYLINDERS SİLİNDİR
MTS 0440	CATERPILLAR	1 W 6209	CATERPILLAR 3408 ENGINE D8 L 10 Counter Weights (Nitrasyon Isıl İşlem Yok)	V 8 CYL
MTS 0450	CATERPILLAR	4N 7692/4N 7694/2W 7690/5S 5252	CATERPILLAR 3304 ENGINE	4 CYL
MTS 0451	CATERPILLAR	4N 7693/4N 7696/2W 7458	CATERPILLAR 3306 ENGINE	6 CYL
MTS 0452	CATERPILLAR	1W 9771/4N 1112	CATERPILLAR 3204 ENGINE	4 CYL
MTS 0453	CATERPILLAR	1051725/1013228/7W 5206	CATERPILLAR 3116 ENGINE CATERPILLAR 3126 ENGINE	6 CYL
MTS 0454	CATERPILLAR	8M 4505	CATERPILLAR 3304 ENGINE OLD MODEL	4 CYL
MTS 0455	CATERPILLAR	6N 2823 / 6N 2822	CATERPILLAR D8 K D 342 DOZER	6 CYL
MTS 0456	CATERPILLAR	1 W 6209	CATERPILLAR 3408 ENGINE D8 L 10 Counter Weights	V 8 CYL
MTS 0457	CATERPILLAR	1 W 5009	CATERPILLAR 3408 ENGINE D9 R 9 Counter Weights	V 8 CYL
MTS 0480	KOMATSU	6207-31-1110	KOMATSU 95 S 6D 95L	6 CYL
MTS 0481	KOMATSU	6136-31-1010 / 6136-31-1110	KOMATSU 105 S 6D 105	6 CYL
MTS 0484	KOMATSU	6127-31-1012 / 6127-31-1114	KOMATSU 155 S 6D 155	6 CYL
MTS 0485	KOMATSU	6151-35-1010	KOMATSU 125 S 6D 125	6 CYL
MTS 0486	KOMATSU	6222-31-1102	KOMATSU 108 S 6D 108	6 CYL
MTS 0800	CUMMINS	3908032 / 3929037 / 3907804	CUMMINS 6B/BT/BTA 6B 6.9L 6-590	6 CYL
MTS 0802	CUMMINS	3917320 / 3918986 / 3910968 / 3914584	CUMMINS 6CT 8,32-6,830	6 CYL
MTS 0803	CUMMINS	3608833 / 111786 / 3000140	CUMMINS NT-855 Bull Nose Straight, 6 Bolt Holes, 1 Keyway	6 CYL
MTS 0804	CUMMINS	3096362 / 3201082 / 3347569	CUMMINS K19 KTA 1150 QSK 19 6 Bolt Holes, 1 Key Way, 1 Dowel Hole	6 CYL
MTS 0805	CUMMINS	3029340 / 3001588 / 208470	CUMMINS NT-855 Taper Nose 6 Bolt Holes Tapered, 1 Bolt Hole, 1 Key	6 CYL

TRUCK & TRAILER & TANK / KAMYON & TIR & TANK

MOTUS REF.	BRAND / MARKA	ORIGINAL PART NO ORJİNAL REFERANS NO	ENGINE TYPE / MOTOR TİPİ	CYLINDERS SİLİNDİR
MTS 1000	MERCEDES	401 030 1901 / 401 030 1501	MERCEDES BENZ OM 401 V6 OLD MODEL	V6 CYL
MTS 1011	MERCEDES	401 030 2301 / 401 030 2501	MERCEDES BENZ OM 401-V6 LA - GÜÇLENDİRİLMİŞ / REINFORCED	V6 CYL
MTS 1020	MERCEDES	421 030 2401 / 421 030 2501/421 030 1701	MERCEDES BENZ OM 421-V6	V6 CYL
MTS 1031	MERCEDES	441 030 2101/441 030 1701/441 030 2201	MERCEDES BENZ OM 441-V6 ENGINE A/LA - GÜÇLENDİRİLMİŞ / REINFORCED	V6 CYL
MTS 1040	MERCEDES	422 030 4301/422 030 4401/422 030 3701	MERCEDES BENZ OM 422-V8 ENGINE	V8 CYL
MTS 1041	MERCEDES	442 030 0801/442 030 0301/442 030 0401	MERCEDES BENZ OM 442 A / LA -V8 ENGINE	V8 CYL
MTS 1050	MERCEDES	402 030 3001/402 030 3201/402 030 2301	MERCEDES BENZ OM 402-V8 ENGINE	V8 CYL
MTS 1060	MERCEDES	541 030 0201/541 030 0601/541 030 0801	MERCEDES BENZ OM 501 / 541-V6 ENGINE A/LA - GÜÇLENDİRİLMİŞ / REINFORCED	V6 CYL
MTS 1070	MERCEDES	355 030 6701	MERCEDES BENZ OM 355 (Flange: 8 Bolt Holes- 1 Dowel)	6 CYL
MTS 1071	MERCEDES	355 030 6801	MERCEDES BENZ OM 355-T A (Flange : 12 Bolt Holes - 1 Dowel)	6 CYL
MTS 1080	MERCEDES	423 030 3301/423 030 3401/423 030 1501	MERCEDES BENZ OM 423 / OM 443	V10 CYL
MTS 1081	MERCEDES	403 030 3001	MERCEDES BENZ OM 403	V10 CYL
MTS 1090	MERCEDES	366 030 1102/366 030 0702/366 030 1602	MERCEDES BENZ OM 366 A/LA - GÜÇLENDİRİLMİŞ / REINFORCED	6 CYL
MTS 1100	MERCEDES	360 030 1601/360 030 1201/360 030 0101	MERCEDES BENZ OM 360 A/LA	6 CYL
MTS 1110	MERCEDES	352 030 3402/352 030 6802/352 030 7402	MERCEDES BENZ OM 352 OLD MODEL- GÜÇLENDİRİLMİŞ / REINFORCED	6 CYL
MTS 1111	MERCEDES	352 030 3702/352 030 7802/352 030 5802	MERCEDES BENZ OM 352 NEW MODEL	6 CYL
MTS 1112	MERCEDES	352 030 8002	MERCEDES BENZ OM 352 / A	6 CYL
MTS 1120	MERCEDES	314 030 3202/314 030 6102/314 030 5205	MERCEDES BENZ OM 314 OLD MODEL	4 CYL
MTS 1121	MERCEDES	314 030 5502/314 030 6202/314 030 3302	MERCEDES BENZ OM 314 NEW MODEL	4 CYL
MTS 1130	MERCEDES	447 030 0701/447 030 0801/496 030 0201	MERCEDES BENZ OM 427 OM 447 - 8 counter-weights / 8 Ağırlıklı	6CYL
MTS 1131	MERCEDES	447 030 0701/447 030 0801/496 030 0201	MERCEDES BENZ OM 427 OM 447 - 4 Counter-weights / 4 Ağırlıklı	6CYL
MTS 1150	MERCEDES	457 030 0201/457 031 0001/496 030 0001	MERCEDES BENZ OM 457 LA/HLA 8 İnteg. Counter-weights 8 Kendinden Ağırlıklı	6CYL
MTS 1160	MERCEDES	906 030 0301/906 030 0902/906 030 0702	OM 906 LA EURO 2 / 3 STROKE 130 mm FLANGE 98 mm - GÜÇLENDİRİLMİŞ / REINFORCED	6 CYL
MTS 1161	MERCEDES	906 030 0602/906 030 0502/906 030 1102	OM 906 LA EURO 2 / 3 STROKE 130 mm FLANGE 103 mm - GÜÇLENDİRİLMİŞ / REINFORCED	6 CYL


TRUCK & TRAILER & TANK / KAMYON & TIR & TANK

MOTUS REF.	BRAND / MARKA	ORIGINAL PART NO ORJİNAL REFERANS NO	ENGINE TYPE / MOTOR TİPİ	CYLINDERS SİLİNDİR
MTS 1170	MERCEDES	904 030 0301 / 904 030 0702	OM 904 ATEGO EURO 2 / 3 STROKE 130 mm FLANGE 98 mm - GÜÇLENDİRİLMİŞ / REINFORCED	4 CYL
MTS 1171	MERCEDES	904 030 1002/904 030 0701/904 030 0801	OM 904 ATEGO EURO 2 / 3 STROKE 130 mm FLANGE 103 mm - GÜÇLENDİRİLMİŞ / REINFORCED	4 CYL
MTS 2050	MAN	51 02101 7204	D2538 V8 MOTOR	8 CYL
MTS 2080	MAN	51 02101 7600 / 51 02101 7243 / 51 02101 7542	D 2540 ME MOTORBD2840 ME MOTOR D2540 MT MOTOR	10 CYL
MTS 2081	MAN	51 02101 7205	D 2530 ME MOTOR D 2530 MT MOTOR	10 CYL
MTS 2100	MAN	51 02101 7405/51 02101 7390	MAN D2566 / 8 D2556 8 Counterweights / 8 Ağırlıklı / 8 Weighted	6 CYL
MTS 2101	MAN	51 02101 7741 / 51 02101 7515 / 51 02101 7708 / 51 02101 6037	MAN D2566 / 4 D2556 4 Counterweights / 4 Ağırlıklı / 4 Weighted	6 CYL
MTS 2110	MAN	51 02101 6081 / 51 02100 6019	MAN D 2866 8 Counterweights integrated 8 Baltalı Kendinden Ağırlıklı / 8 Weighted	6 CYL
MTS 2115	MAN	51 02100 6018 /51 02101 6082/51 02101 6038 /51 02101 6044	MAN D 2876 TGA 8 Counterweights integrated 8 Baltalı Kendinden Ağırlıklı - GÜÇLENDİRİLMİŞ / REINFORCED	6 CYL
MTS 2116	MAN	51 02101 0673	MAN D 2066 TGA - GÜÇLENDİRİLMİŞ / REINFORCED	6 CYL
MTS 2120	MAN	51 02101 7123	MAN D 2156 IKARUS 8 Counterweights / 8 Ağırlıklı	6 CYL
MTS 2130	MAN	51 02101 60222/51 02101 6090/51 02101 6050/51 02101 0608	MAN D 0836	6 CYL
MTS 3010	DAF	00 9 1157 / 065 3687	DAF 825 ENGINE DAF 2300	6 CYL
MTS 3020	DAF	067 0906	1160 DKC/L, DKX, DKF/L SERIE II DAF 2800 / 3300	6 CYL
MTS 3030	DAF	028 8836	1160 ATI DAF 3300 ATI 3600	6 CYL
MTS 3040	DAF	129 7017 / 087 715	DAF 95, DAF 85 KONİK / CONICAL - GÜÇLENDİRİLMİŞ / REINFORCED	6 CYL
MTS 3041	DAF	129 7017 / 087 715	DAF 95, DAF 85 DÜZ / STRAIGHT - GÜÇLENDİRİLMİŞ / REINFORCED	6 CYL
MTS 3042	DAF	129 1804 / 165 3898	DAF XF - GÜÇLENDİRİLMİŞ / REINFORCED	6 CYL
MTS 3090	VOLVO		VOLVO BOLINDER D 350	3 CYL
MTS 3091	VOLVO	4804115	VOLVO TD 42	4 CYL
MTS 3092	VOLVO	4804294	VOLVO TD 45	4 CYL
MTS 3094	VOLVO	465755 / 465678	VOLVO TD 60	6 CYL
MTS 3095	VOLVO	420662 / 465798	VOLVO TD 61	6 CYL
MTS 3096	VOLVO	471749	VOLVO TD 70	6 CYL
MTS 3097	VOLVO	477116	VOLVO TD 71	6 CYL
MTS 3100	VOLVO	8194490/ 467709/ 154 5657/ 20381958	VOLVO TD 101-102 10 HOLES 10mm FLANGE	6 CYL

TRUCK & TRAILER & TANK / KAMYON & TIR & TANK

MOTUS REF.	BRAND / MARKA	ORIGINAL PART NO ORJİNAL REFERANS NO	ENGINE TYPE / MOTOR TİPİ	CYLINDERS SİLİNDİR
MTS 3110	VOLVO	8194359/8126780/ 8194456/ 20381957	VOLVO TD 102- TD 103 14 HOLES 14mm FLANGE	6 CYL
MTS 3120	VOLVO	6888740 / 470681-8/ 468617	VOLVO TD 120- 122 10 HOLES 10mm FLANGE	6 CYL
MTS 3130	VOLVO	8125583 / 478676-0	VOLVO TD 122- TD 123 14 HOLES 14mm FLANGE	6 CYL
MTS 3140	VOLVO	1547468-7 / 1547468/20533089	VOLVO D 12 / A/CD D12- FH12	6 CYL
MTS 3200	SCANIA	342060 / 130 8467 / 312739	DS 111-112-113 SCANIA H112 , H113	6 CYL
MTS 3210	SCANIA	133 8810	DSC 09 SCANIA 94 - 310	6 CYL
MTS 3220	SCANIA	142 1506 / 142 3374 / 174 3584	DSC 12 SCANIA 124 360	6 CYL
MTS 3230	SCANIA	370 850 / 134 0 620 / 137 9 666	DS/C 14 SCANIA 141-142-143	V8 CYL
MTS 3240	SCANIA		DSC 08	6 CYL
MTS 3800	RENAULT	5600551684	PREMIUM 400 - GÜÇLENDİRİLMİŞ / REINFORCED	6 CYL
MTS 9990	A-5-TANK		M60-M48 A5T2 (AVDS 1790 MOTOR) BATTLE TANK V-12	12 CYL
MTS 9997	SAWIEM R-V-I			6 CYL

MOTUS offers high quality products to its customers by virtue of its qualified personnel, high production capacity, broad product range and innovative technologies.



OUR CERTIFICATES

MOTUS donanımlı personeli, yüksek üretim kapasitesi, geniş ürün yelpazesi ve yenilikçi teknolojileri sayesinde müşterilerine yüksek kaliteli ürünler sunuyor.





Factory / Fabrika

*Konya Organize Sanayi Bölgesi
9. SK. NO:37 SELÇUKLU/KONYA/TÜRKIYE*

Phone: +90 332 239 2000

Fax: +90 332 239 1243

Email: info@motuscompany.com

Exports Department: export@scf.com.tr

www.motuscompany.com

